

## Self Flashed Solar Fan Installation Instructions—Existing Roof



**Step #1**—Measure 24” - 36” down from the center of the ridge cap depending on roof slope and place a mark for the center of the hole to be cut in Step #2. Top of Housing should be lower than the top of the ridge.



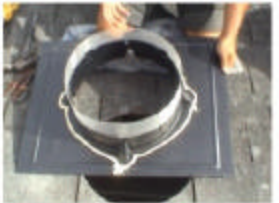
**Step #2**—Cut 13-3/4” circular hole into roof. The hole should be approximately 1/4” larger than the base opening in order to properly waterproof the base to the roof.



**Step #3**—Mark notches on shingles and cut notches out so that the shingle can fit properly against the base.



**Step #4** —Remove any roofing nails in the area where the base will be slid under the shingles.



**Step #5**—Lay a bead of Silicone Building Sealant around the base as shown in the photo (Dow Corning 795 or equivalent is recommended).



**Step #6**—Slide the base under the roof shingles until the base is centered over the opening.



**Step #7**—Lift roofing shingles and nail base perimeter to the roof (including bottom, sides and top of base).



**Step #8**—Lay a bead of Silicone Building Sealant over each nail head and along the edges in order to seal each shingle to the base or roof decking.



**Step #9**—Lay a bead of Silicone Building Sealant along the edge of the shaft base and tool the bead to insure waterproof integrity.



**Step #10**—Place the panel housing and fan onto the base.



**Step #11**—Screw the housing onto the base.



**Step #12**—Take off the cardboard protective cover and enjoy your new solar fan.

